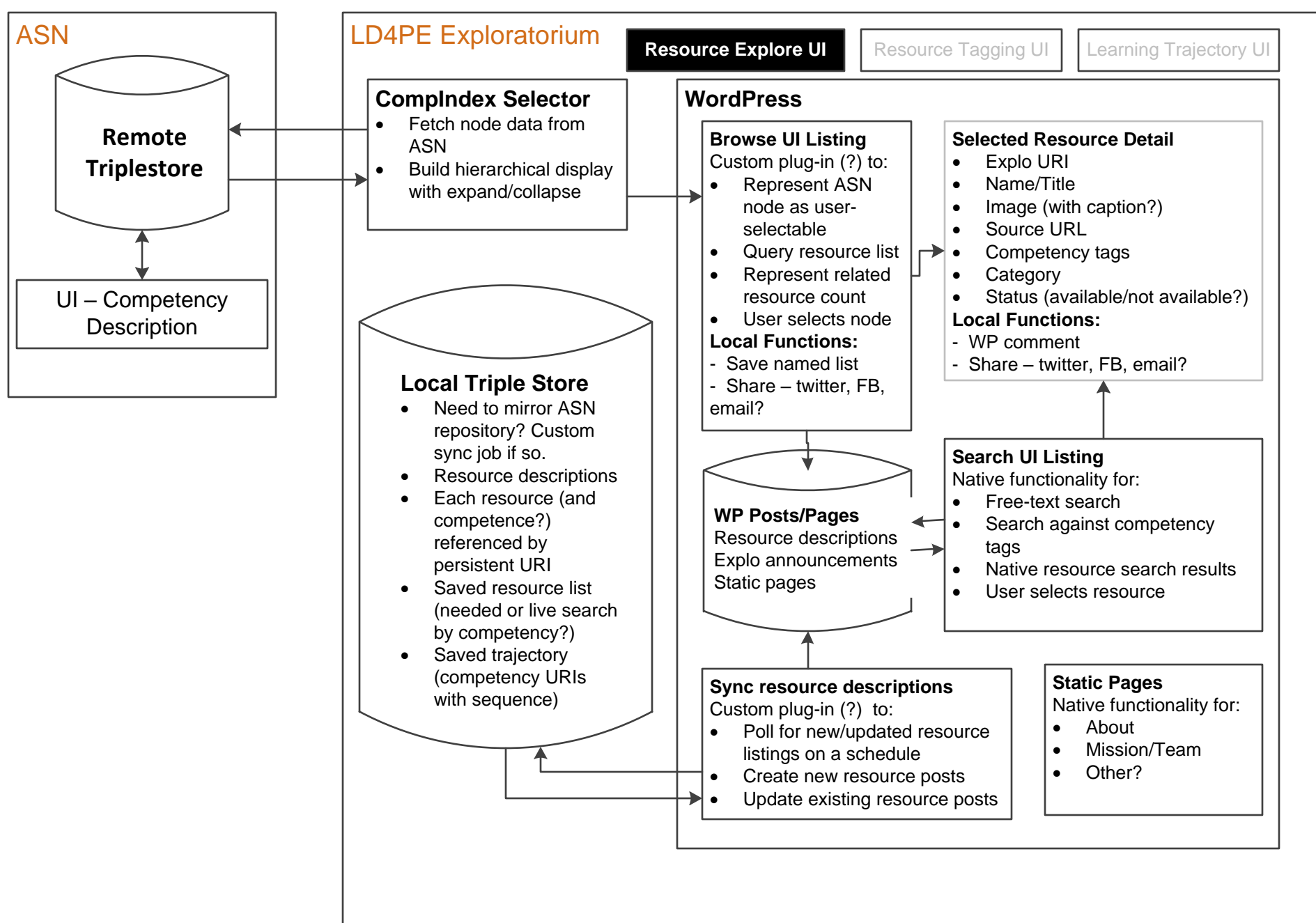


System Architecture – LD4PE

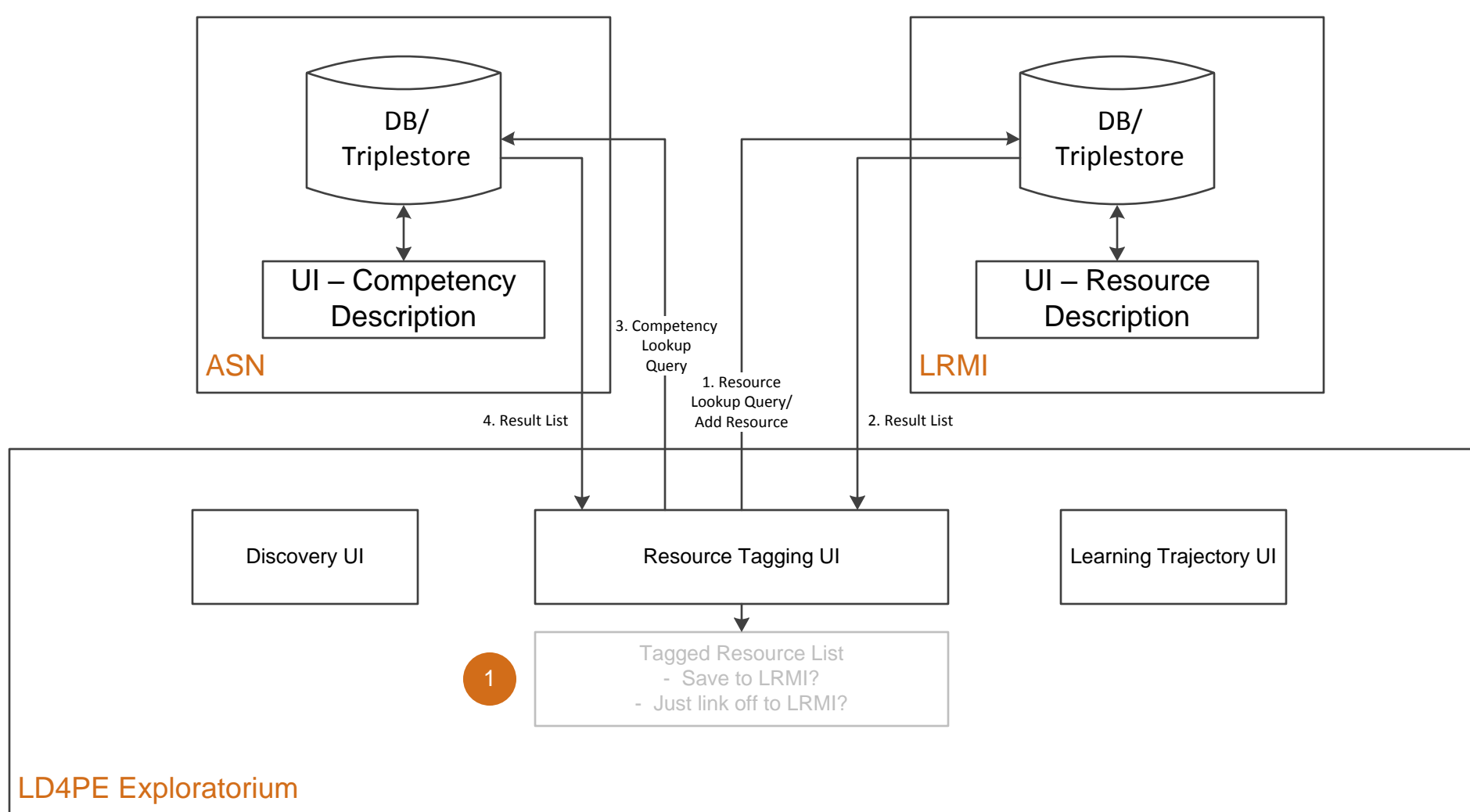
Draft 0.3



- 1 1 Assumes resources are/can be associated to ASN competencies
- 2 2 Open Source search tool (Solr? Lucene?) to index competencies for fast lookup access
- 3 3 Run-time query initiates with top-level node + children, then re-freshes as user selects nodes
- 4 4 For both search & browse, background query gets resource results for competencies.
- 5 5 UI displays competencies returned by search or browse with summary of linked resources + sibling, parent, and child competencies (each with its resource count)
- 6 6 User can save/bookmark competencies and/or resources from result list to named set, retrievable/referencable (sp?) via URI
- 7 7 User can share a named result set socially or via email, or output as RDF/XML (other formats?)
- 8 8 User comments on resources (and competencies?), named result lists store in a local triplestore with LRMI/ASN URIs
- 9 9 Are named competency sets updated per changes in ASN? (Query ASN for competency URI at load of result set?)

System Architecture – LD4PE

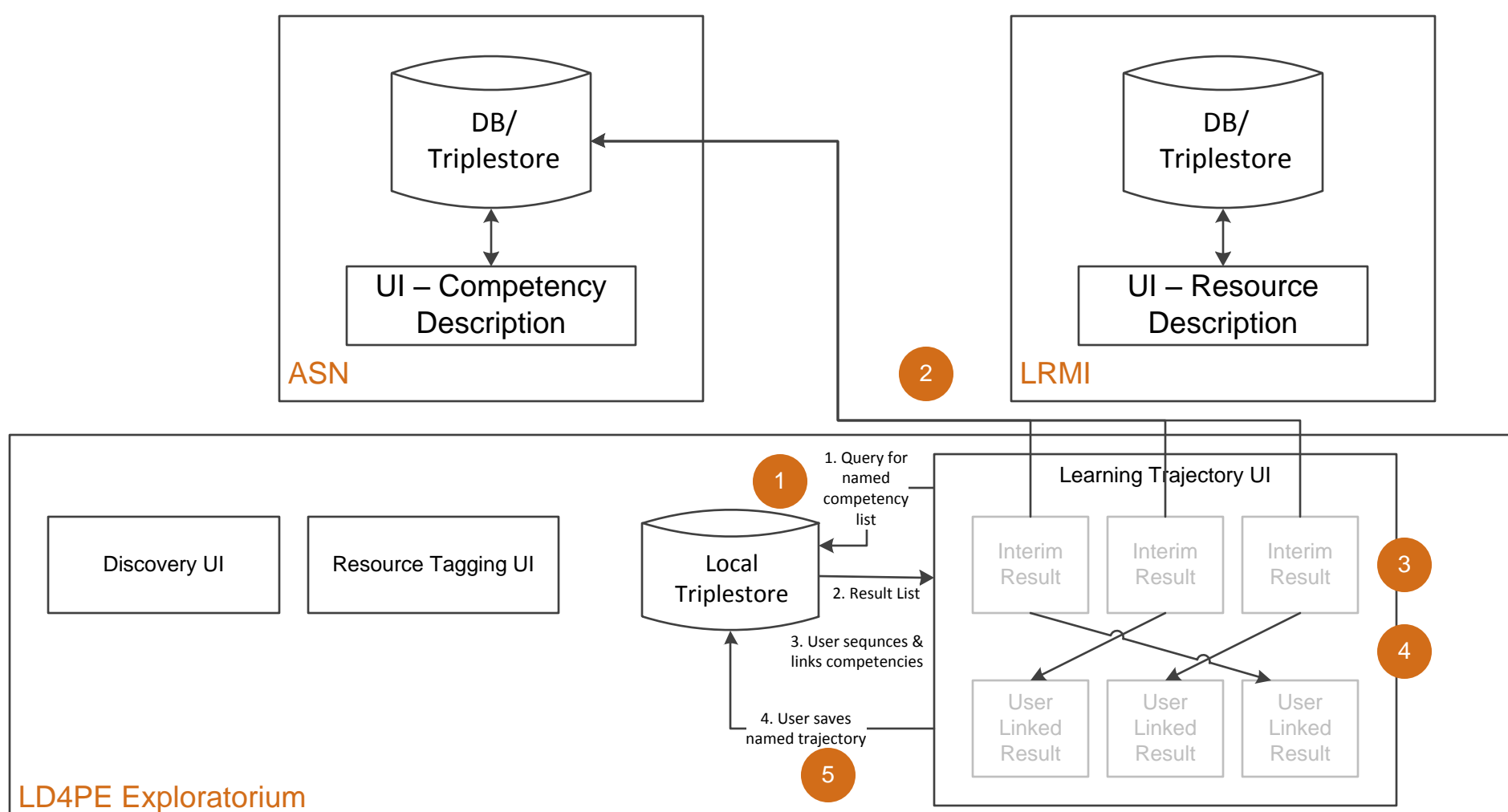
Draft 0.2



- 1 Much is t.b.d. here – Lookup against ASN for keywords/tags from LRMI results? Lookup against search index instead, then query ASN for selected competencies from result set? Simply link off to the LRMI environment & use tools there?

System Architecture – LD4PE

Draft 0.2



- 1 Build learning trajectory from named result set rather than run-time search/query to ASN?
- 2 Need option to query ASN for related competencies not in named result set. Need to update/find new resource associations?
- 3 Each result gives link to related competencies and resources.
- 4 Trajectory UI gives drag & drop or other controls to link competencies in defined relations (ontology for this?)
- 5 User can save named trajectory with retrievable/referncable (sp?) URI